

BEAM CLAMP

BC01 - Beam Clamp

Size Range: 3/8" and 1/2" or M10 and M12

Material: Ductile iron, hardened steel cup point set screw and locknut

Finish: Black or Galvanized

Service: Structural attachment to top or bottom of metal beams, purlins, channel, or angel iron

Approvals:

- Complies with Federal Specification A-A-1192A (Type 19 & 23) WW-H-171-E (Type 23) and MSS-SP-69 (Type 19 & 23).
- FM approved & UL/ULC Listed

Ordering: Specify Part Number & Finish

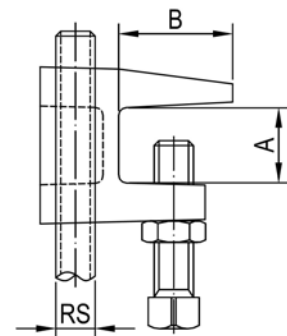


Part Number	RS	A	B	Wt.	Set Screw	Max. Rec. Load (lbs)	
						TOP	BOTTOM
BC01-3/8	3/8	3/4	1 1/8	0.31	3/8	500	250
BC01-1/2	1/2	3/4	1 1/4	0.53	1/2	950	760

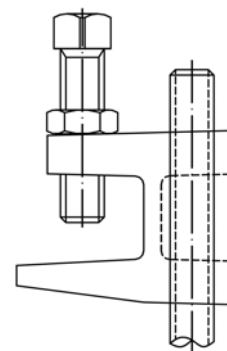
NOTE: Set screw must be tightened and torqued onto the sloped side of the I-beam.

Part Number	RS	A	B	Wt.	Set Screw	Max. Rec. Load (N)	
						TOP	BOTTOM
BC01-M10	M10	19	29	0.14	M10	2220	1110
BC01-M12	M12	19	31	0.24	M12	4220	3380

NOTE: Set screw must be tightened and torqued onto the sloped side of the I-beam.



TOP



BOTTOM

