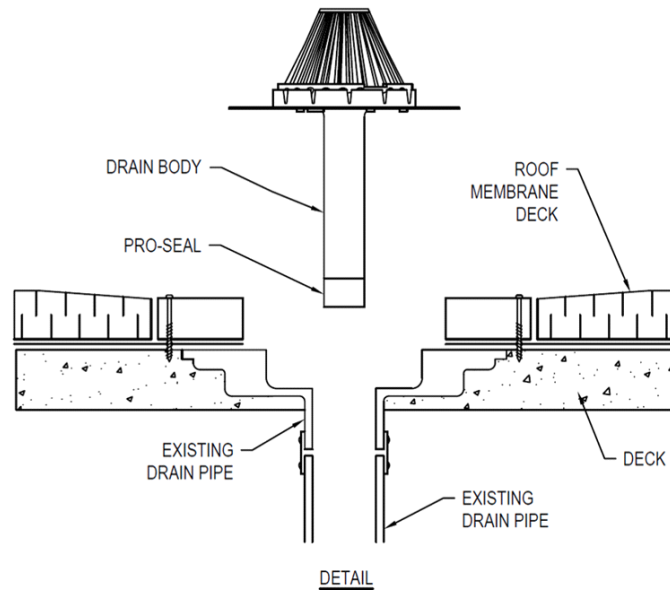


Dimensional Data are Subject to Manufacturing Tolerance and Change Without Notice



SEAL EXPANSION CAPACITIES FOR ALUMINATOR & PROSEAL DRAINS					
DRAIN SIZE	STARTING OD OF SEAL/ OUTLET	FITS INTO PIPE ID	MAXIMUM EXPANSION DIAMETER OF SEAL	ID OF SEAL	FLOW CAPACITY
3"	2.85"	2 7/8" - 3 1/4"	3.40"	2.19"	45
4"	3.80"	3 7/8" - 4 1/4"	4.40"	3.12"	85
6"	5.70"	5 7/8" - 6 1/4"	6.40"	5"	210

ENGINEERING SPECIFICATION: RD16-AL

All Aluminum Retrofit Drain with 16" [406mm] Diameter Flange and 12" [305mm] Heavy-Duty Aluminum Body, 1-1/4" Tall Heavy-Duty Aluminum Ring, 10" diameter x 6" Tall Aluminum Strainer, Standard Rubber Seal.

Material: Aluminum

Type: Retrofit

Body: Heavy Gauge Spun Aluminum

Flange Diameter: 16" [406mm]

Drain Outlet Length: 12" [305mm]

Clamping Ring: 10" [250mm] Aluminum

Strainer Diameter: 10" [250mm] Aluminum

Strainer Height: 6" [152mm]

SUFFIXES

- | | | | |
|------|-------------------------------|-----|------------|
| -IW2 | 2" Internal Water Dam | -3 | 3" Outlet |
| -IW4 | 4" Internal Water Dam | -4 | 4" Outlet |
| -EW2 | 2" External Water Dam | -6 | 6" Outlet |
| -VB | Aluminum Vortex Breaker | -8 | 8" Outlet |
| -XL | 22" [559mm] Long drain outlet | -10 | 10" Outlet |
| -FT | Flip-Top Dome | | |