

PIPE ROLLER

PR01 - Roller Hanger

Size Range: 2" through 24"

Material: Carbon steel & Cast iron

Finish: Hot-dip galvanizing, other finish available upon request

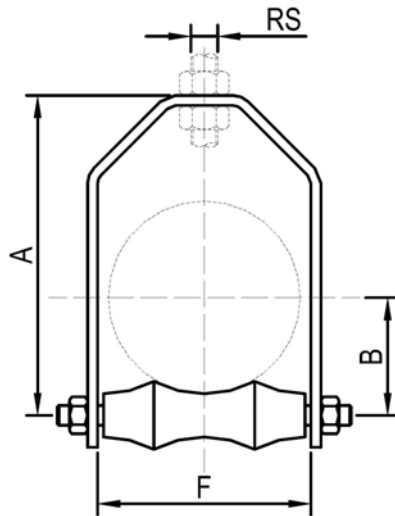
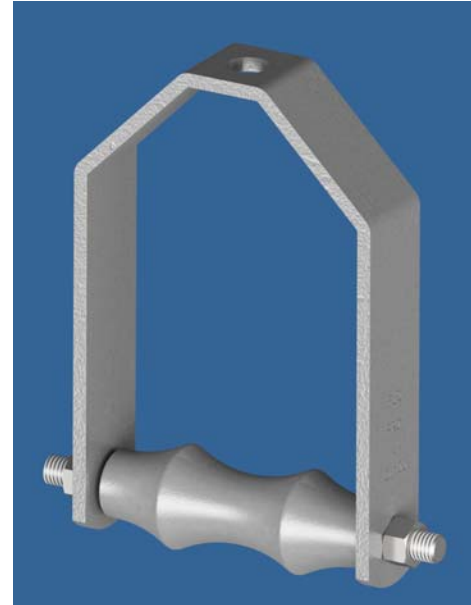
Service:

- For suspension of pipe from a single rod where horizontal Movement may occur because of expansion or contraction

Approvals:

- Complies with Federal Specification A-A-1192A (Type 43) WW-H-171-E (Type 44) and MSS-SP-58 (Type 43).

Ordering: Specify Part Number



Part Number (HDG)	Nominal Pipe Size		RS		A		B		F		WT.		Max. Rec. Load	
	in.	mm	in.	mm	in.	mm	in.	mm	in.	mm	lb	kg	lbs	kN
PR01H-050	2	DN50	3/8	M10	4.38	111	1.63	41	2.75	70	1.1	0.48	150	0.67
PR01H-065	2½	DN65	1/2	M12	5.00	127	2.00	51	3.25	83	1.3	0.59	225	1.00
PR01H-080	3	DN80	1/2	M12	6.38	162	2.25	57	3.88	99	1.6	0.71	310	1.38
PR01H-100	4	DN100	5/8	M16	7.50	190	2.75	70	4.94	125	2.8	1.28	475	2.11
PR01H-125	5	DN125	5/8	M16	8.63	219	3.50	89	6.00	152	4.4	2.01	685	3.05
PR01H-150	6	DN150	3/4	M20	10.25	260	4.00	102	7.13	181	6.0	2.71	780	3.47
PR01H-200	8	DN200	7/8	M22	12.75	324	5.13	130	9.05	230	11.4	5.18	780	3.47
PR01H-250	10	DN250	7/8	M22	15.00	381	6.38	162	11.25	286	17.4	7.88	965	4.30
PR01H-300	12	DN300	7/8	M22	17.50	445	7.50	191	13.25	337	24.6	11.2	1200	5.34
PR01H-350	14	DN350	1	M24	19.00	480	8.38	213	14.50	368	36	16.4	1200	5.34
PR01H-400	16	DN400	1	M24	20.75	527	9.50	241	16.50	419	44	20.0	1200	5.34
PR01H-450	18	DN450	1	M24	23.75	603	10.50	267	18.50	470	54	24.5	1400	6.23
PR01H-500	20	DN500	1¼	M30	26.00	660	11.63	295	20.50	521	74	33.6	1600	7.12
PR01H-550	22	DN550	1½	M39	30.31	770	12.60	320	22.44	570			1600	7.12
PR01H-600	24	DN600	1½	M39	32.50	827	13.81	351	24.63	626	126	57.2	1600	7.12